

High TB burden | High HIV burden |

Population 2009 (millions) 40

Estimates of burden * 2009	Number (thousands)	Rate (per 100 000 pop)
Mortality (excluding HIV)	62 (2.9–12)	15 (7.4–29)
Prevalence (incl HIV)	110 (45–190)	282 (113–465)
Incidence (incl HIV)	120 (99–150)	305 (248–367)
Incidence (HIV-positive)	53 (43–64)	134 (109–162)
Case detection, all forms (%)	85 (70–100)	

Case notifications 2009

New cases	(%)	Retreatment cases	(%)
Smear-positive	37 402 (38)	Relapse	3 643 (34)
Smear-negative	32 787 (33)	Treatment after failure	182 (2)
Smear unknown	11 727 (12)	Treatment after default	
Extrapulmonary	17 438 (18)	Other	6 886 (64)
Other			
Total new	99 354	Total retreatment	10 711
Total < 15 years	6 643		

Total new and relapse	102 997	(94% of total)
Total cases notified	110 065	

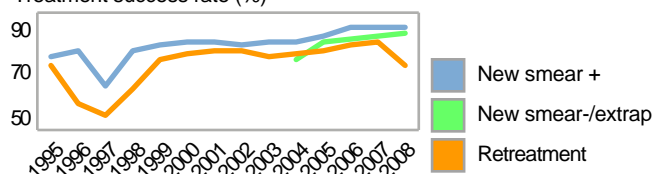
Drug regimens

Rifampicin used throughout treatment	Yes
% of patients treated with fixed-dose combinations (FDCs)	100
Paediatric formulations procured	Yes

Treatment success rate 2008 (%)

New smear-positive	85
New smear-negative/extrapulmonary	83
Retreatment	72

Treatment success rate (%)



MDR-TB, Estimates among notified cases * 2008

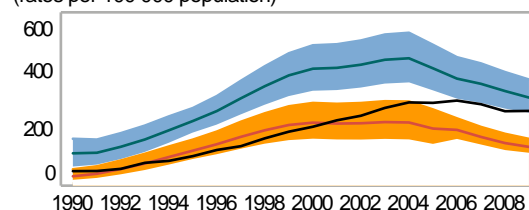
% of new TB cases with MDR-TB	0.0 (0.0–0.90)
% of retreatment TB cases with MDR-TB	0.0 (0.0–7.7)
Estimated MDR-TB cases among new pulmonary TB cases notified in 2009	0 (0–740)
Estimated MDR-TB cases among retreated pulmonary TB cases notified in 2009	0 (0–820)

MDR-TB reported cases 2009	New	Retreat-ment	Total
Cases tested for MDR-TB	0	1 971	2 188
% of notified tested for MDR-TB	0	18	2
Confirmed cases of MDR-TB	0	130	150
MDR-TB patients started treatment			140

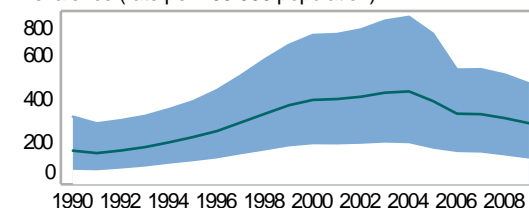
Laboratories	2008	2009	2010
Smear (per 100 000 population)	24	3	3.3
Culture (per 5 million population)	0.7	0.8	0.7
DST (per 10 million population)	0.3	1	1

Second-line DST available	Outside country
National Reference Laboratory	Yes

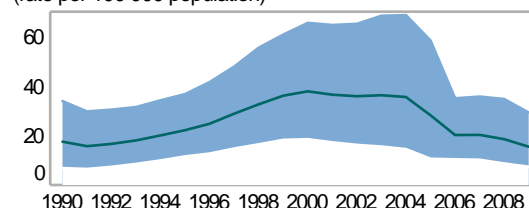
Incidence (HIV+TB in orange), notifications (black) (rates per 100 000 population)



Prevalence (rate per 100 000 population)



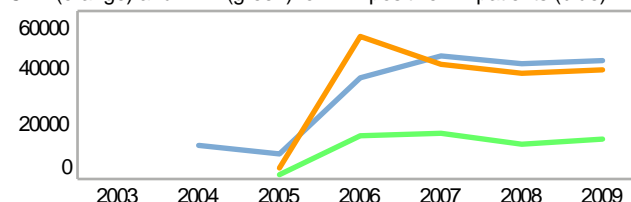
Mortality excluding HIV (rate per 100 000 population)



TB/HIV 2009

TB patients with known HIV status	96 676
% of TB patients with known HIV status	88
TB patients that are HIV-positive	42 294
% of tested TB patients that are HIV-positive	44
% HIV-positive TB patients started on CPT	92
% HIV-positive TB patients started on ART	34
HIV-positive people screened for TB	14 116
HIV-positive people provided with IPT	

CPT (orange) and ART (green) for HIV-positive TB patients (blue)



Financing	2010	2011
Total budget (US\$ millions)	38	59
Available funding (US\$ millions)	12	30
% of budget funded	33	51
% available funding from domestic sources	34	37
% available funding from Global Fund	27	49

NTP Budget (blue) and available funding (green) (US\$ millions)

